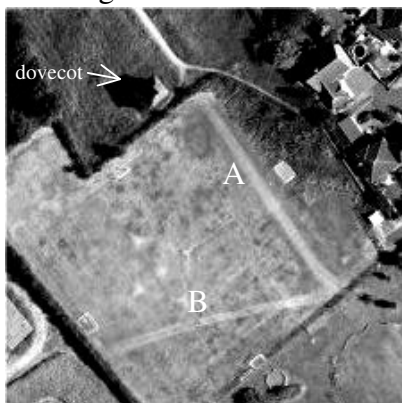


Cropmarks.

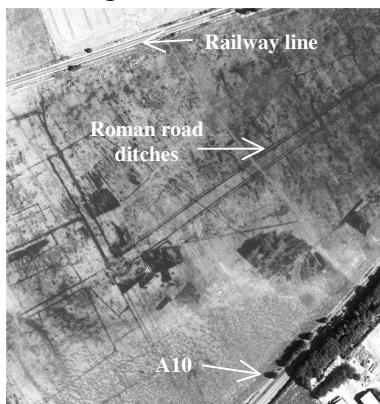
Probably not a subject you've given a lot of thought to, but incredibly useful in getting to know the past. Foxton has a wonderful selection. It's easiest to see them from aerial photos – available on all good browsers – but sometimes you can see them from the ground. The problem is that they are not visible all the time. The easiest to see in the village are across the

school football pitch behind the dovecot. Line A was Jenkins's Lane that starts at the gate to the dovecot field. Line B, running left to right, was Back Lane, the remains of which is now Maltings Lane. These two lines are parch marks that show up best when it has been dry for a while because the grass can't get enough moisture due to a

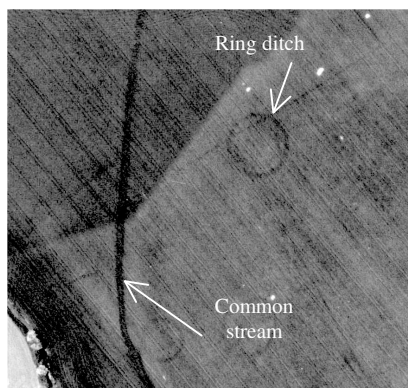


layer of stones just under the surface. Other cropmarks show up best over filled in ditches mainly because of deeper topsoil. This gives a crop a better chance to grow, so it may look greener (all of the pictures are better in colour) or just be tall enough to cast a shadow. It can be exactly the opposite, such that the ditch still works enough to dry the soil more, and give weaker growth.

IS



Between the A10 and the railway line just south of the crossing



West Hill field behind West Hill Road